

Adjustable Workbenches

Introducing the pinnacle of versatility and functionality in the world of workbenches - the Adjustable Workbench by Republic. Engineered to adapt to your unique requirements, this workbench is designed to enhance your workspace efficiency and comfort. Available in Dove Gray, this durable workbench will last for years to come.

PRECISE HEIGHT ADJUSTMENTS

Whether you're sitting or standing, this workbench adapts easily to your preferred working posture with a remarkable 12" range of height adjustment.

CUSTOMIZED OPTIONS

Choose from a selection of work surface options including hardwood, steel, or a Shop Top® to create the perfect workbench.

Organize your tools and materials effortlessly with versatile accessories, including a convenient drawer, a half-depth shelf, back and end stops for secure storage, and a riser for enhanced workspace organization.



workbench with drawer and one shelf

BASIC WORKBENCH

- 1 Workbench Top
- 2 Open Panel Legs
- 1 Stringer

AVAILABLE ACCESSORIES

- Slide Drawer
- Half-Depth Shelf
- 12" h Shelf Riser
- Back and End Stop Kit



basic workbench



workbench with drawer

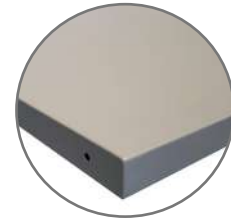


workbench with two shelves

Adjustable Workbenches

BUILD YOUR OWN WORKBENCH

Easily build your own adjustable height workbench. Overall height range is 32.25" to 44.25" high. Choose from a variety of work surfaces and sizes. Optional accessories are available to help you create the ideal workstation for your needs. Steel workbench components are available in Dove Gray.



steel



hardwood



shop top®

1 Select Workbench Top

SIZE	PAINTED STEEL	HARDWOOD	SHOP TOP
48"w x 30"d	232765	232715	232739
48"w x 36"d	232766	232716	232740
60"w x 30"d	232767	232717	232741
60"w x 36"d	232768	232718	232742
72"w x 30"d	232769	232719	232743
72"w x 36"d	232770	232720	232744
96"w x 36"d	232774	232722	232745

2 Add Legs

LEGS - ONE PAIR	
30"d - 2 Pack	232758
36"d - 2 Pack	232759

3 Add Stringer

STRINGER	
48"w	232650
60"w	232651
72"w	232652
96"w	232653



drawer



lower shelf

OPTIONAL ACCESSORIES

DRAWER w/ KEYED LOCK	
18"w x 18"d x 6"h	232788

LOWER SHELF*	
48"w x 12"d	232640
60"w x 12"d	232642
72"w x 12"d	232644
96"w x 12"d	232646

*Two shelves can be used to create more storage depth

RISER	
48"w x 12"h	232624
60"w x 12"h	232625
72"w x 12"h	232626

BACK & END STOPS	
48"w x 30"d	232600
48"w x 36"d	232601
60"w x 30"d	232602
60"w x 36"d	232603
72"w x 30"d	232604
72"w x 36"d	232605