

24 GA. REINFORCED TOP

22 GA. REINFORCED FULL SHELF

22 GA. HALF SHELVES
(ADJUSTABLE ON 3/4" CENTERS)

COAT ROD

CENTER PARTITION

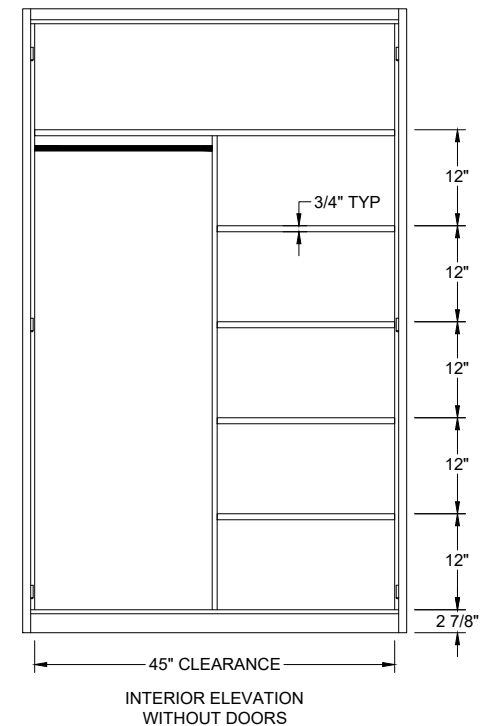
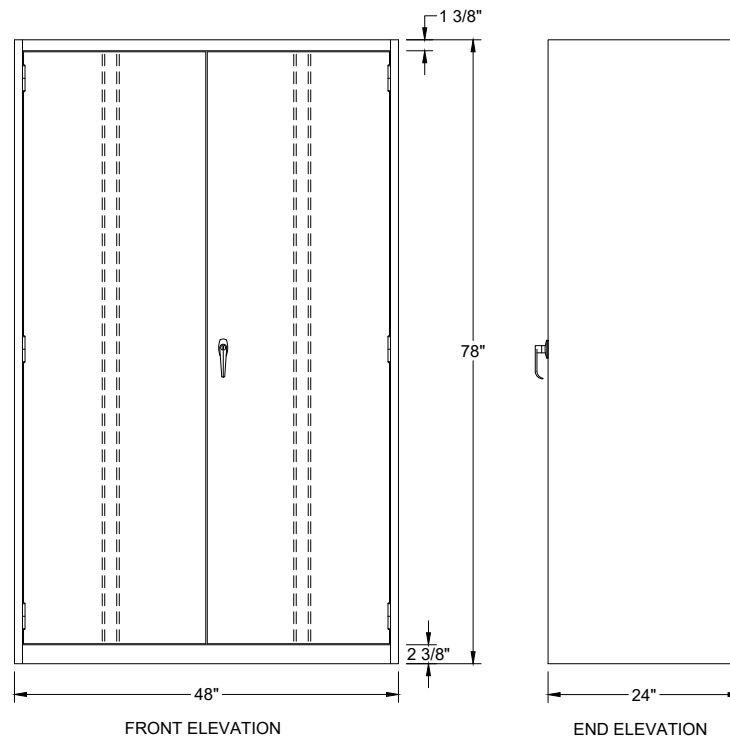
22 GA. REINFORCED DOORS

THREE POINT LOCKING SYSTEM
POLISHED CHROME PLATED
TURN HANDLE W/BUILT-IN
GROOVED KEY LOCK

22 GA. REINFORCED HALF BACKS

24 GA. SIDES W/ SQUARE CORNERS

24 GA. REINFORCED BOTTOM



1200 SERIES COMBINATION WARDROBE CABINET
KNOCK DOWN CAT# RS1233 / ASSEMBLED CAT# RS1233SU
48"W x 24"D x 78"H W/ 1 FULL SHELF, 4 HALF SHELVES & COAT ROD
COLOR: 20-DOVE GRAY