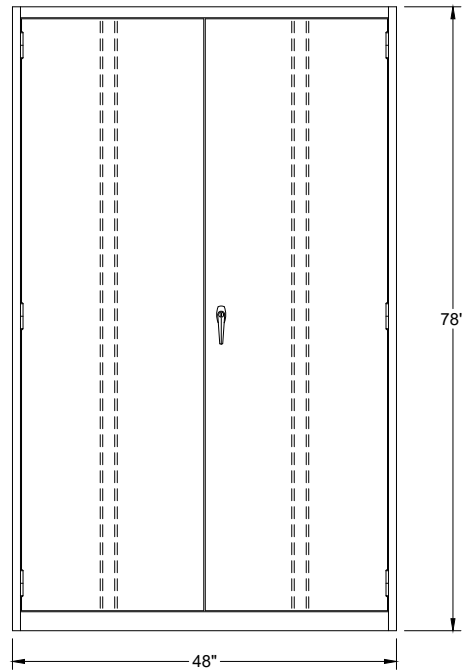
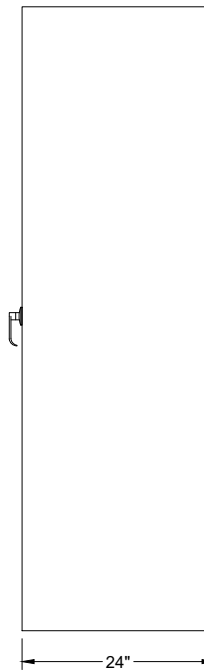


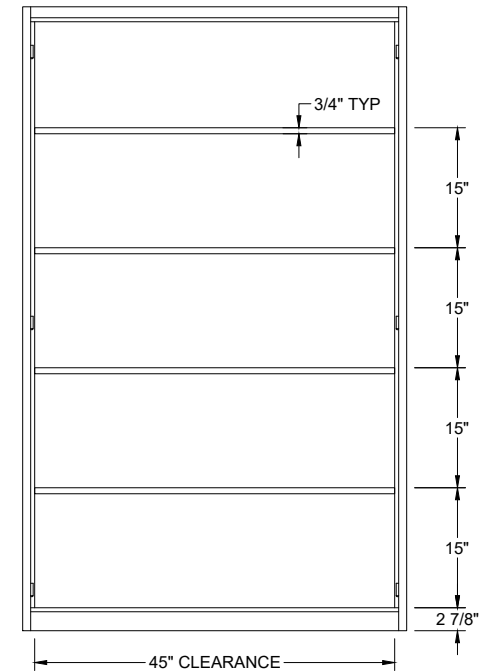
- 24 GA. REINFORCED TOP
- 22 GA. REINFORCED SHELF  
(ADJUSTABLE ON 3/4" CENTERS)
- 22 GA. REINFORCED DOORS
- THREE POINT LOCKING SYSTEM  
POLISHED CHROME PLATED  
TURN HANDLE W/BUILT-IN  
GROOVED KEY LOCK
- 22 GA. REINFORCED HALF BACKS
- 24 GA. SIDES W/ SQUARE CORNERS
- 24 GA. REINFORCED BOTTOM



FRONT ELEVATION



END ELEVATION



INTERIOR ELEVATION  
WITHOUT DOORS

1200 SERIES OFFICE CABINET  
 KNOCK DOWN CAT# RS1231 / ASSEMBLED CAT# RS1231SU  
 48"W x 24"D x 78"H W/ 4 SHELVES  
 COLOR: 20-DOVE GRAY