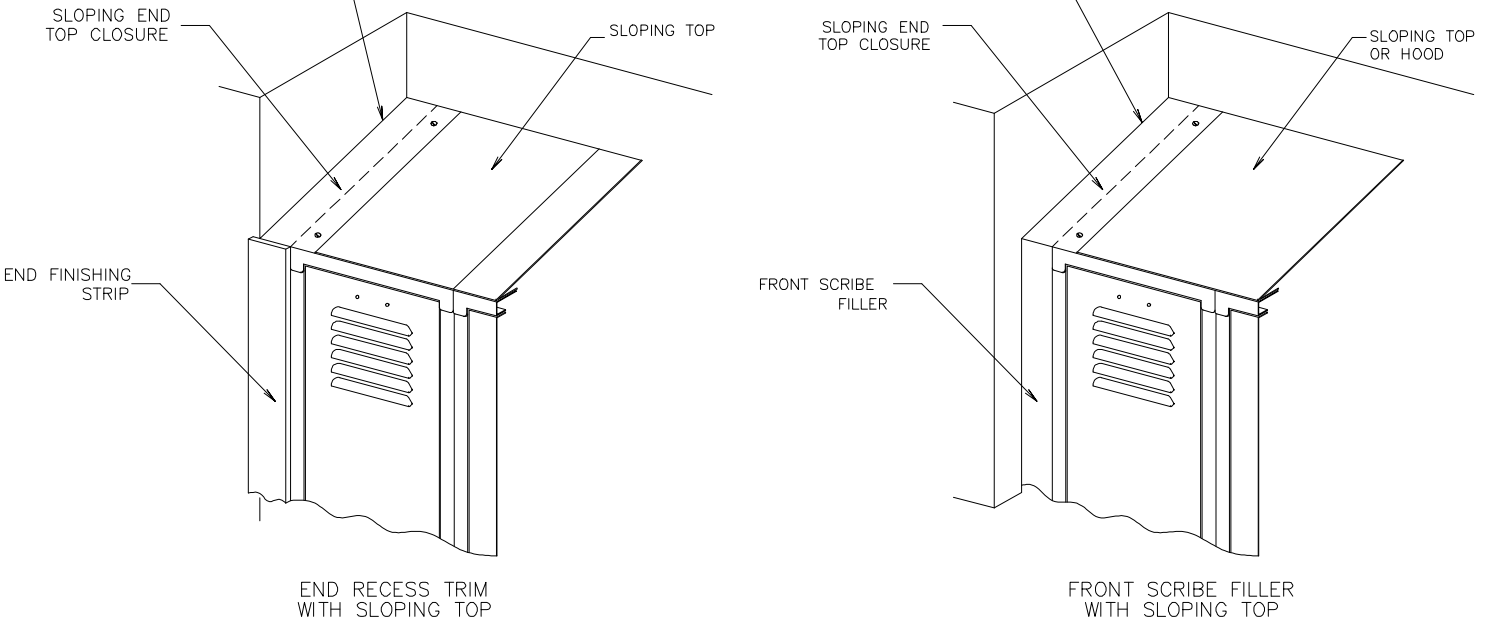
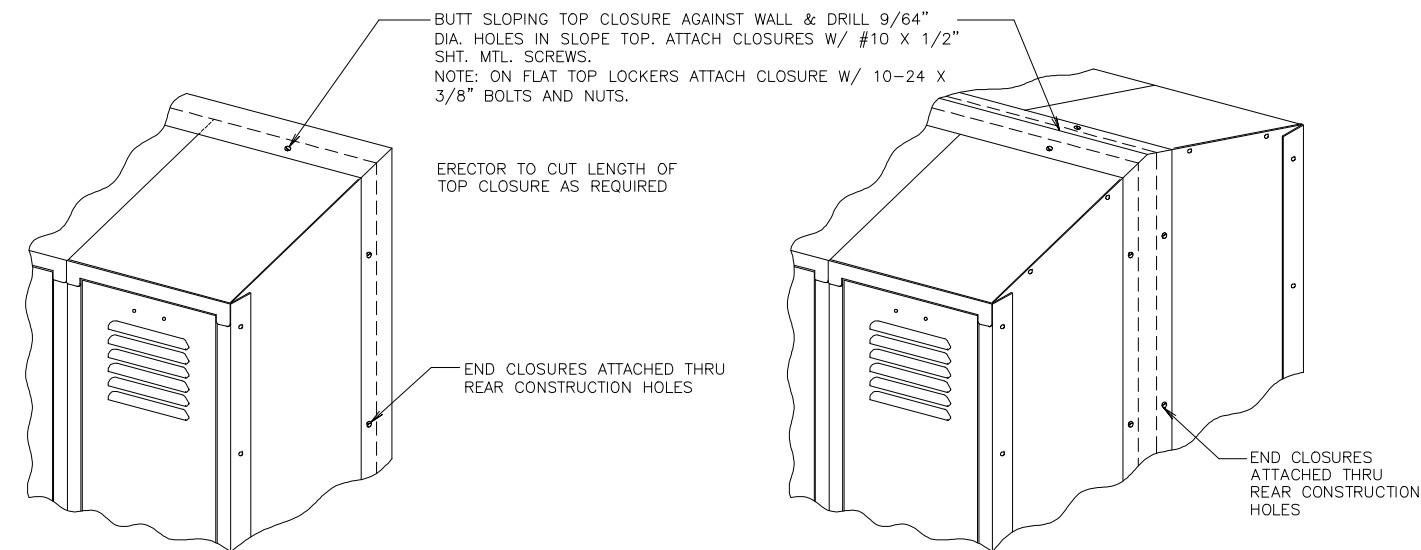


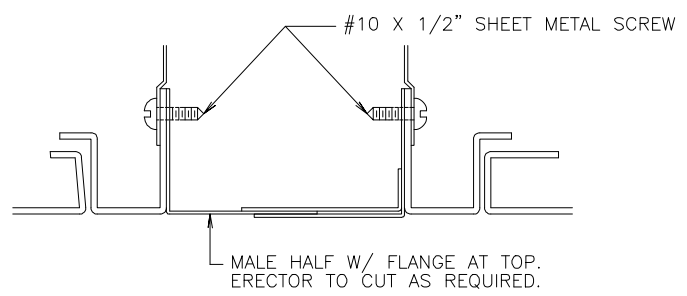
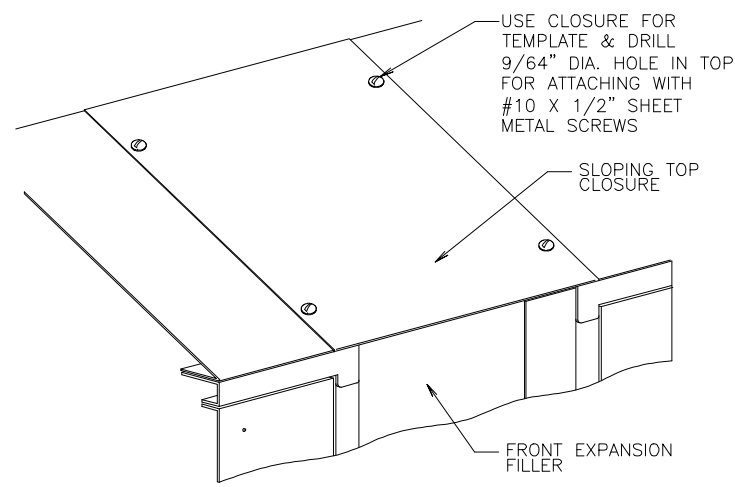
BUTT SLOPING END TOP CLOSURE AGAINST WALL & DRILL 9/64" DIA. HOLES IN LOCKER SLOPING TOP. ATTACH CLOSURE W/ #10 X 1/2" SHEET METAL SCREWS.
NOTE: ON FLAT TOP LOCKERS ATTACH TOP CLOSURE W/ 10-24 X 3/8" BOLTS AND NUTS.



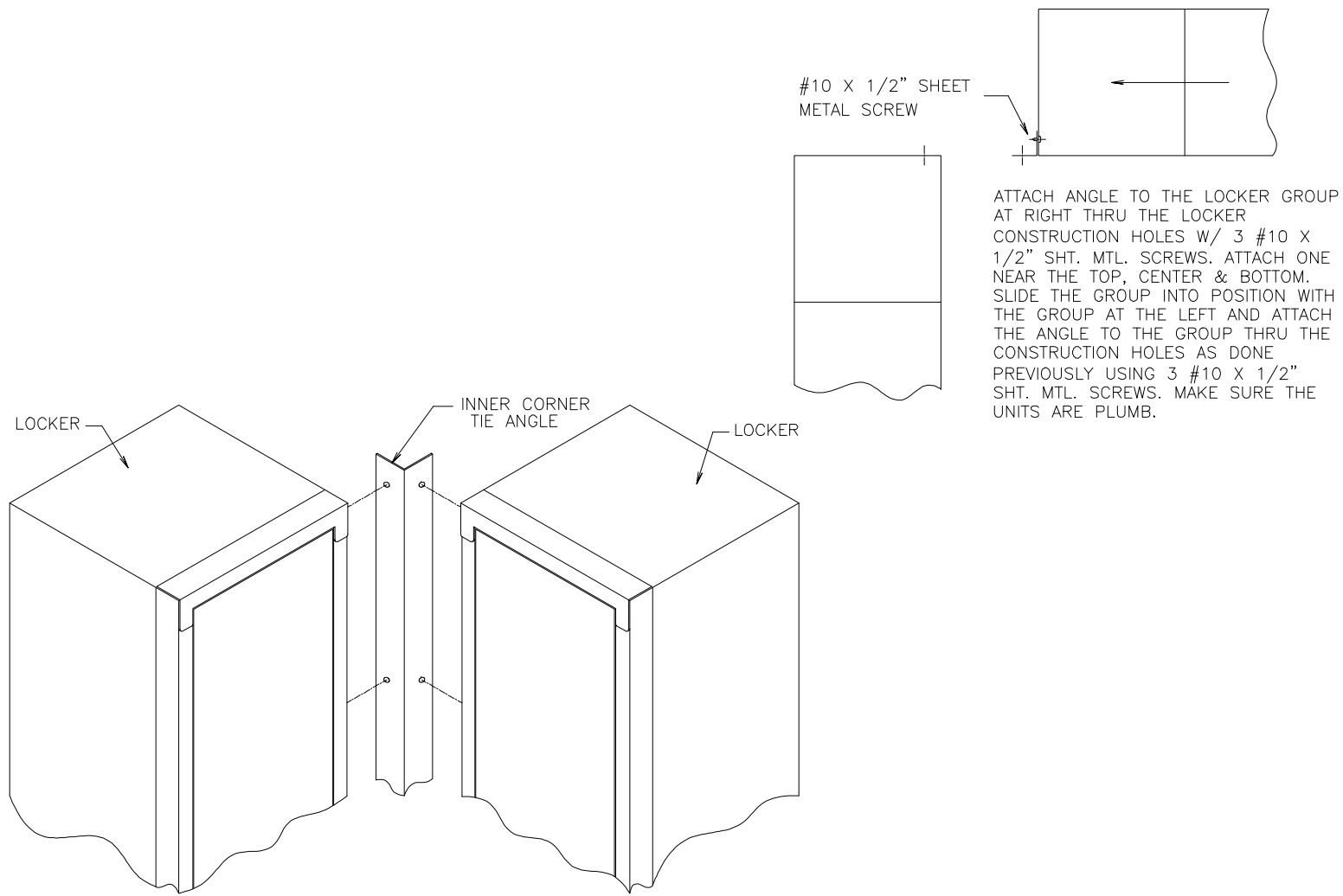
INSTALLATION OF SLOPING END TOP CLOSURES



INSTALLATION OF TOP AND END CLOSURE STRIP

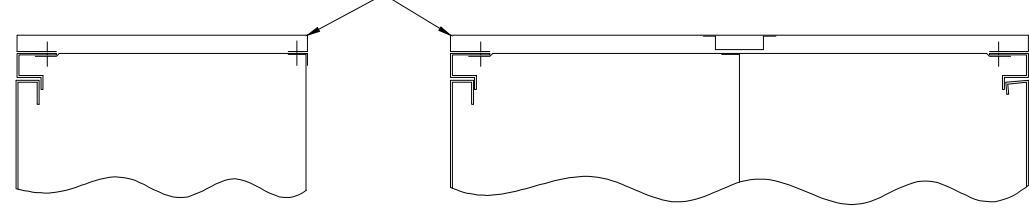


INSTALLATION OF FRONT EXPANSION FILLER



INSTALLATION OF INNER CORNER TIE ANGLE

ATTACH BOXED END PANELS W/ 6 #10 X 1/2" SHT. MTL. SCREWS ONE NEAR TOP, CENTER & BOTTOM THRU FRONT & REAR CONSTRUCTION HOLES.



INSTALLATION OF BOXED END PANELS

INSTALLATION INSTRUCTIONS FOR LOCKER CLOSURES, FILLERS AND PANELS

LGH REPUBLIC LYON
LYON GROUP HOLDINGS

REVISIONS E-220215-1
9111-CA