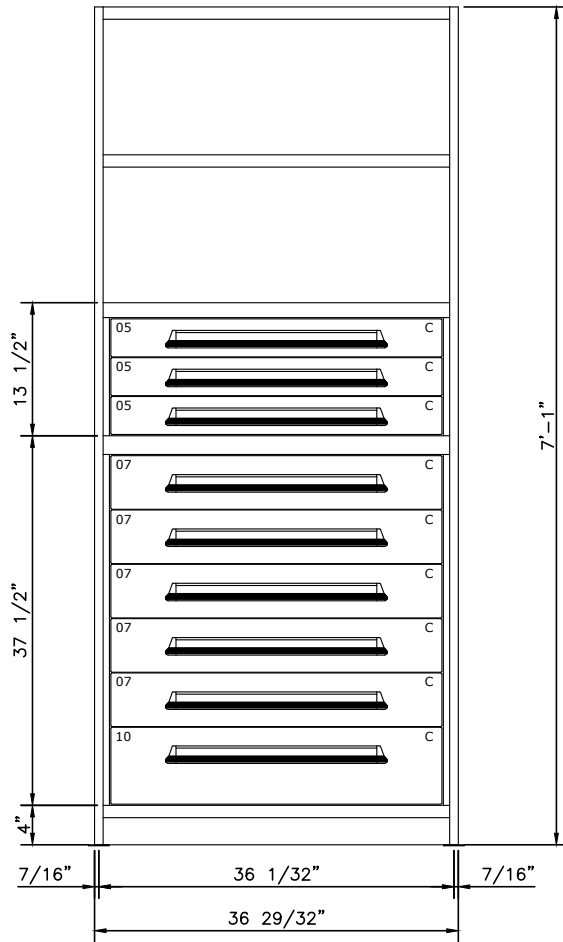
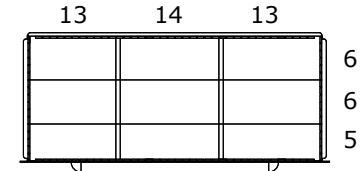
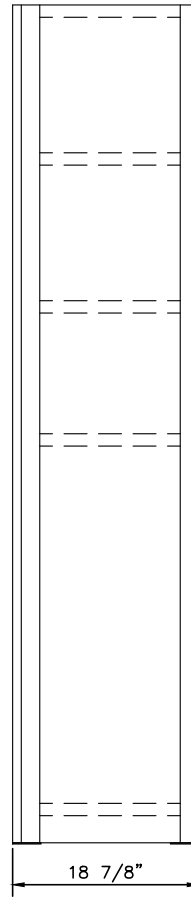


COMPARTMENT SIZE	3	4	5	6	7	8	9	10	11	12	13	14	15	16
DIMENSION (CLEAR)	1 $\frac{7}{8}$ "	2 $\frac{11}{16}$ "	3 $\frac{1}{2}$ "	4 $\frac{1}{4}$ "	5 $\frac{1}{16}$ "	5 $\frac{7}{8}$ "	6 $\frac{11}{16}$ "	7 $\frac{1}{2}$ "	8 $\frac{1}{4}$ "	9 $\frac{1}{16}$ "	9 $\frac{7}{8}$ "	10 $\frac{11}{16}$ "	11 $\frac{1}{2}$ "	12 $\frac{1}{4}$ "



36" x 18" CLOSED SHELVING STARTER
 BEADED POST AT FRONT
 W/ 22GA. BOX SHELVES
 500 LBS. CAPACITY PER SHELF
 400 LBS. CAPACITY PER DRAWER



DRAWER LAYOUT "C"

9 COMPARTMENTS

PART NUMBER OPTIONS:

DP115035 = PRE-ENGINEERED STARTER UNIT
DP115035A = PRE-ENGINEERED ADD-ON UNIT

DRAWER NUMBER	04	05	06	07	08	09	10	11	12	13	14	15	16	17	18
USABLE HEIGHT	2 $\frac{1}{4}$ "	3"	3 $\frac{7}{8}$ "	4 $\frac{5}{8}$ "	5 $\frac{3}{8}$ "	6 $\frac{1}{4}$ "	7"	7 $\frac{3}{4}$ "	8 $\frac{1}{2}$ "	9 $\frac{3}{8}$ "	10 $\frac{1}{8}$ "	10 $\frac{7}{8}$ "	11 $\frac{3}{4}$ "	12 $\frac{1}{2}$ "	13 $\frac{1}{4}$ "
FRONT HEIGHT	3 $\frac{1}{16}$ "	3 $\frac{7}{8}$ "	4 $\frac{5}{8}$ "	5 $\frac{7}{16}$ "	6 $\frac{3}{16}$ "	7"	7 $\frac{3}{4}$ "	8 $\frac{9}{16}$ "	9 $\frac{3}{8}$ "	10 $\frac{1}{8}$ "	10 $\frac{7}{8}$ "	11 $\frac{3}{4}$ "	12 $\frac{1}{2}$ "	13 $\frac{5}{16}$ "	14 $\frac{1}{16}$ "

Republic 420 N. MAIN STREET
 MONTGOMERY, IL 60538
 (800) 477-1255
 STORAGE PRODUCTS LLC. WWW.REPUBLICSTORAGE.COM

THIS DOCUMENT IS CONFIDENTIAL AND PROPRIETARY. NO PART OF THIS DOCUMENT MAY BE DISCLOSED IN ANY MANNER TO A THIRD PARTY WITHOUT THE PRIOR WRITTEN CONSENT OF REPUBLIC STORAGE PRODUCTS L.L.C.

DATE 7/7/23	DRAWN BY JZ	CHECKED BY .
----------------	----------------	-----------------

DESCRIPTION

**PRE-ENGINEERED MODULAR
 DRAWERS IN SHELVING
 (9) DRAWERS
 (81) COMPARTMENTS**

SHEET 1	DRAWING NUMBER DP115035	REV 1
------------	----------------------------	----------