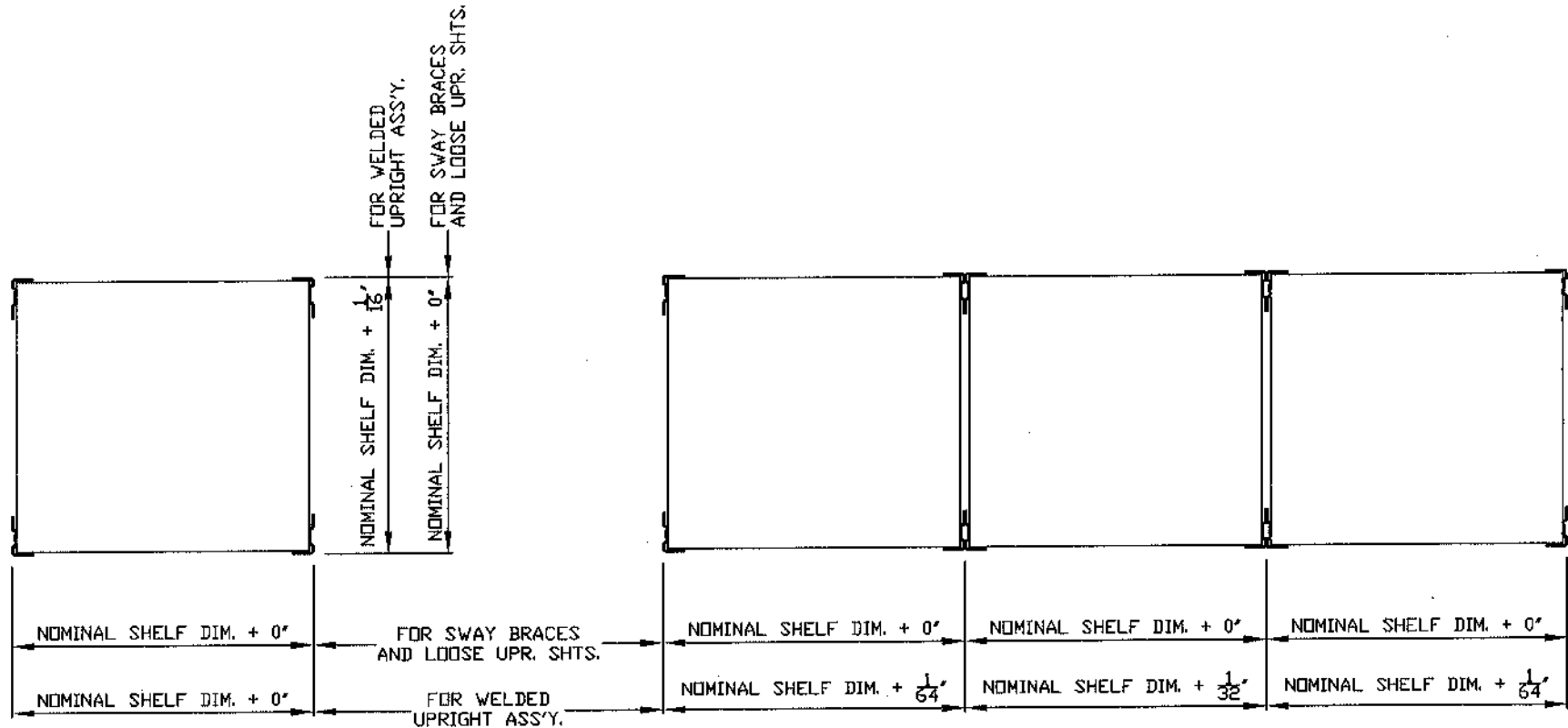


# CLIP SHELVING NOMINAL GROWTH

## ANGLE POST



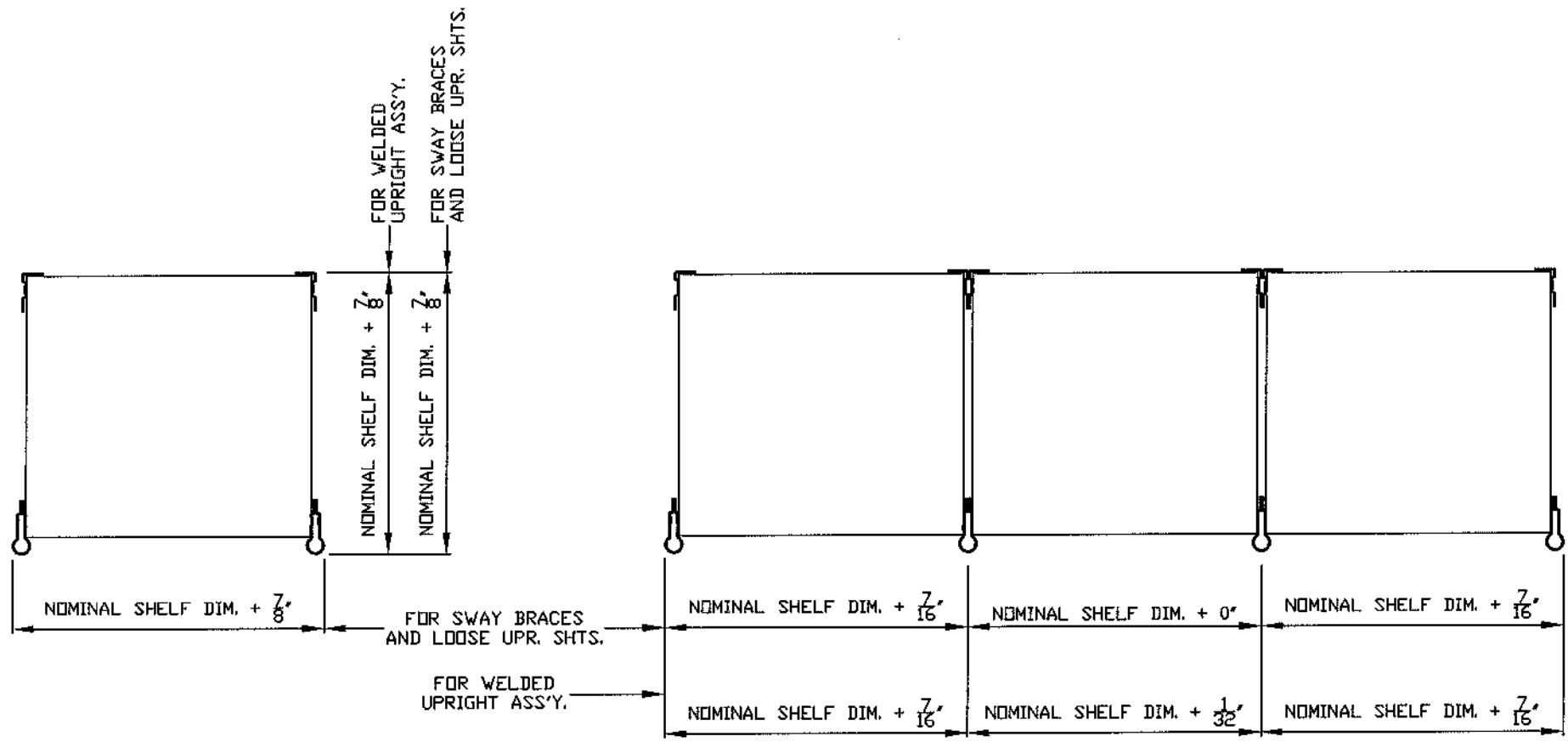
**NOTE 1.** DIMENSIONS ABOVE INDICATE OUT TO OUT DIMENSIONS OF POSTS, ADD 1/8" TO THE DEPTH OF UNITS SHOWN TO ACCOUNT FOR BOLT HEADS ON BACK SHEETS AND BACK BRACES.

**NOTE 2.** WHEN USING BOLTED SIDE SHEETS AND SIDE SWAY BRACES ADD 1/4" TO ROW LENGTH TO ACCOUNT FOR BOLT HEADS AT ROW ENDS

NOMINAL WIDTHS	-----	24", 30", 36", 42", 48", 54", AND 60"
NOMINAL DEPTHS	-----	9", 12", 15", 18", 24", 30", 32", AND 36"

# CLIP SHELVING NOMINAL GROWTH

## FRONT BEADED POST



**NOTE 1.** DIMENSIONS ABOVE INDICATE OUT TO OUT DIMENSIONS OF POSTS, ADD 1/8" TO THE DEPTH OF UNITS SHOWN TO ACCUNT FOR BOLT HEADS ON BACK SHEETS AND BACK BRACES.

NOMINAL WIDTHS	-----	24", 30", 36", 42", 48", 54", AND 60"
NOMINAL DEPTHS	-----	9", 12", 15", 18", 24", 30", 32", AND 36"