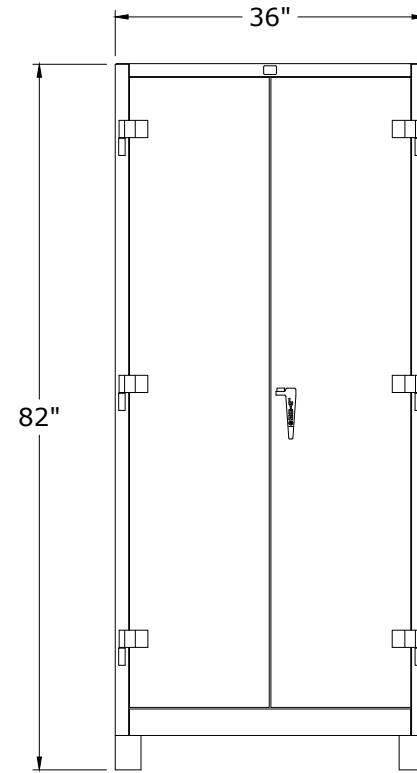
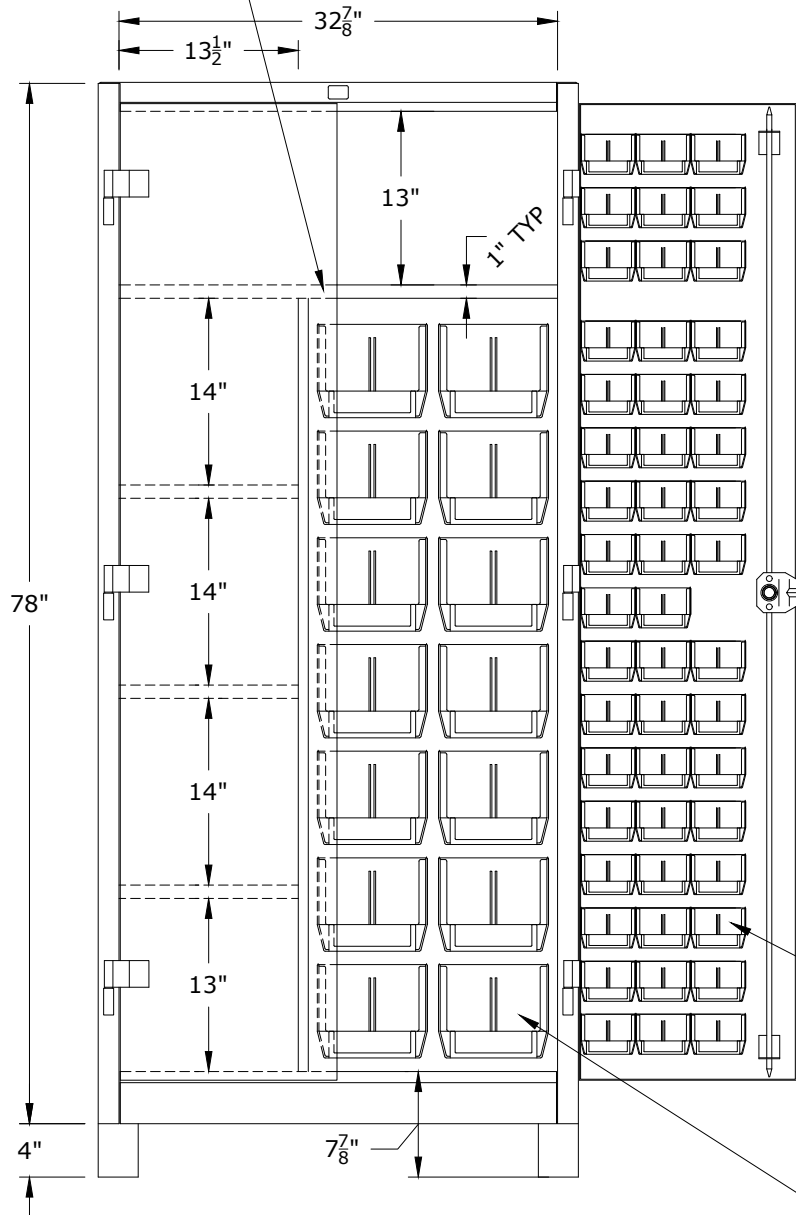
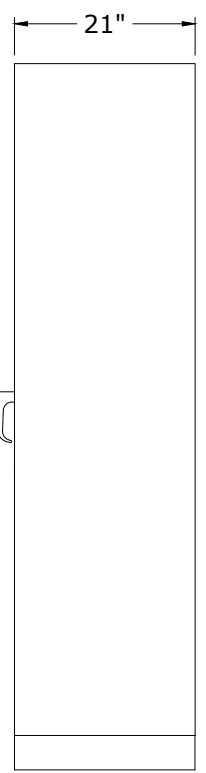


SHELVES ADJUSTABLE
@ 3" CENTER



FRONT CLOSED VIEW



SIDE VIEW

(50) SMALL REMOVABLE
PLASTIC BINS
(4-1/8"W x 5-3/8"D x 3"H)

(14) LARGE REMOVABLE
PLASTIC BINS
(8-1/4"W x 14-3/4"D x 7"H)

Republic 420 N. MAIN STREET
MONTGOMERY, IL 60538
(800) 477-1255
STORAGE PRODUCTS LLC. WWW.REPUBLICSTORAGE.COM

THIS DOCUMENT IS CONFIDENTIAL AND PROPRIETARY. NO PART OF THIS DOCUMENT MAY BE DISCLOSED IN ANY MANNER TO A THIRD PARTY WITHOUT THE PRIOR WRITTEN CONSENT OF REPUBLIC STORAGE PRODUCTS L.L.C.

DATE 07/10/23	DRAWN BY JZ	CHECKED BY .
------------------	----------------	-----------------

DESCRIPTION

ALL WELDED INDUSTRIAL
SHELF/ BIN CABINET
36"W x 21"D x 82"H
(64 BINS)

SHEET	DRAWING NUMBER RS1122	REV 1
-------	--------------------------	----------