

## ASSEMBLY OPERATIONS

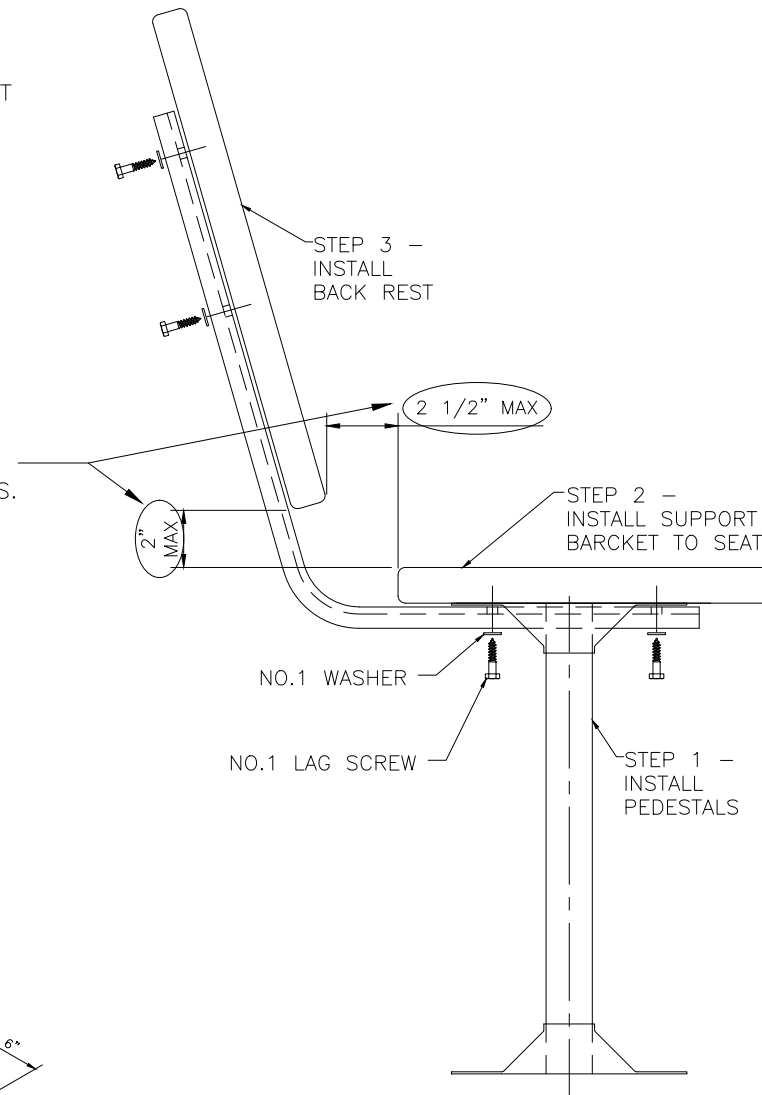
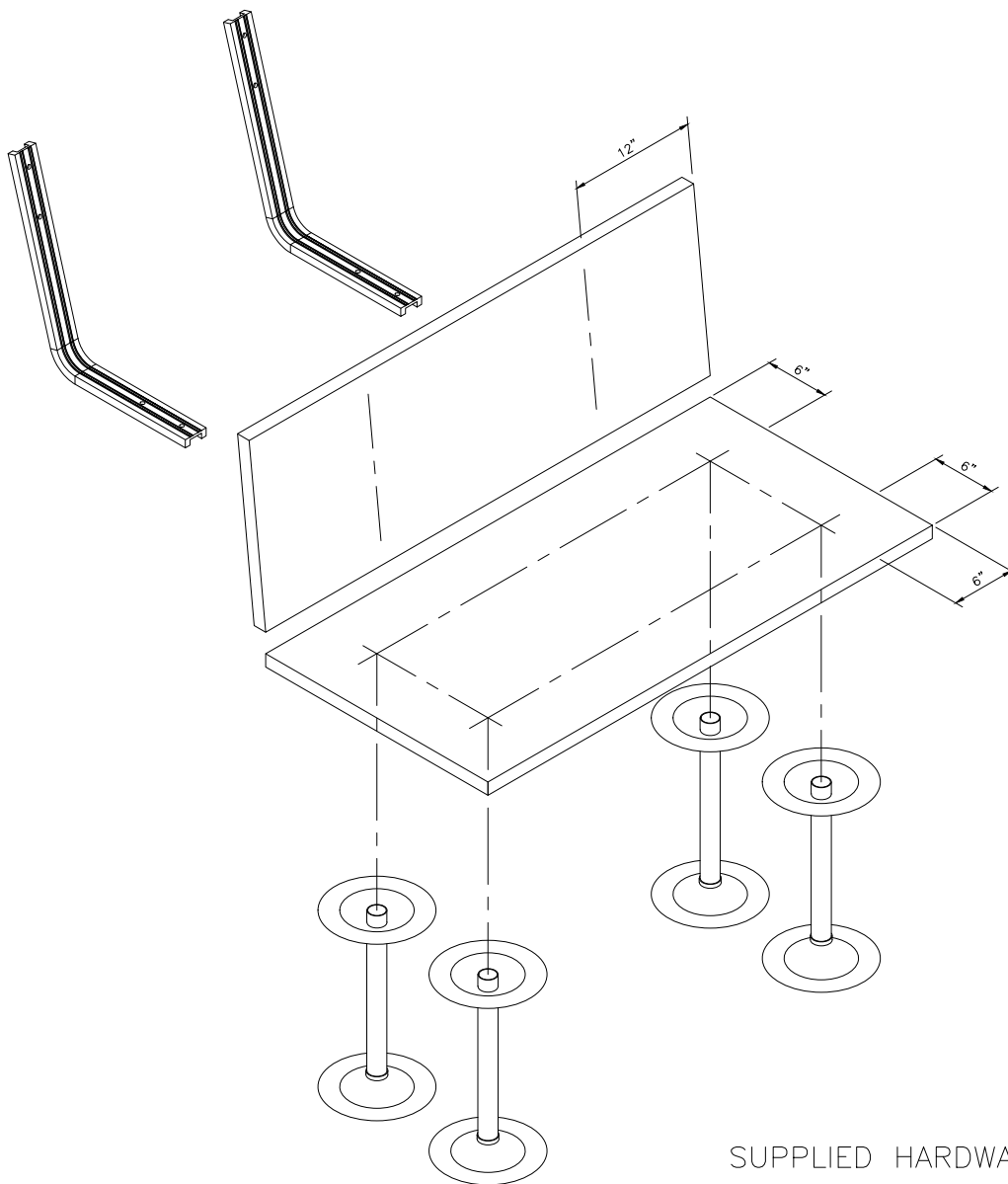
1. FIRST, MARK PEDESTAL LOCATIONS AND INSTALL PER INSTRUCTION 4777-DA (STANDARD BENCH INSTRUCTIONS) DO NOT ANCHOR AT THIS POINT.

2. DRILL  $\frac{3}{16}$  PILOT HOLES INTO UNDER SIDE OF SEAT. ATTACH ALUMINUM BENCH SUPPORT TO THE UNDERSIDE OF THE SEAT USING NO.1 LAG SCREW AND WASHER.

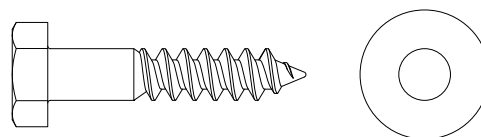
3. DRILL  $\frac{3}{16}$  PILOT HOLES INTO BACK REST. ATTACH BACK REST TO ALUMINUM BENCH SUPPORT USING NO.1 LAG SCREW AND WASHER WHILE MAINTAINING DIMENSIONS SHOWN AT RIGHT.

4. FLIP BENCH INTO POSITION AND ANCHOR PER INSTRUCTION 4777-DA.

**NOTE:** THE GAP BETWEEN THE SEAT AND BACK REST MUST NOT EXCEED THE DIMENSIONS DISPLAYED TO MEET ADA REQUIREMENTS.



### SUPPLIED HARDWARE



NO.1 LAG SCREW AND WASHER

ASSEMBLY INSTRUCTION FOR  
BENCH BACK REST  
ADA LOCKER BENCHES

**LGH** REPUBLIC  
LYON  
LYON GROUP HOLDINGS

REVISIONS  
E-040120-1  
E-190701-2  
E-200127-1

**4777-ADA**